



**KOALA ACADEMY**

**LEARNING WITHOUT WALLS**

[WWW.KOALAACADEMY.CO.UK](http://WWW.KOALAACADEMY.CO.UK)  
[WWW.KOALACOMMUNITYHUB.CO.UK](http://WWW.KOALACOMMUNITYHUB.CO.UK)

THE BRIDGE, 31-33 BRIDGE  
STREET  
ANDOVER, HAMPSHIRE  
SP10 1BE

**NURTURING NEURODIVERGENCE**



# About Us

Koala (Community Hub and Academy) is the trading name for the More Education Charity (no. 1195650) and has been providing support for autistic and neurodivergent people, and their families, since 2019.

It has been through our work at the Koala Community Hub that we have discovered the need for a more flexible and bespoke type of learning for many neurodivergent learners.

Building upon the relationships made at the community hub, the Learning without Walls team will offer flexible opportunities for learning.

The Learning without Walls provision will be led by autistic educators who are knowledgeable and experienced in helping young people overcome their barriers to learning.

## Find out more...



[www.koalaacademy.co.uk](http://www.koalaacademy.co.uk)



[www.koalacommunityhub.co.uk](http://www.koalacommunityhub.co.uk)



[www.moreeducation.co.uk](http://www.moreeducation.co.uk)



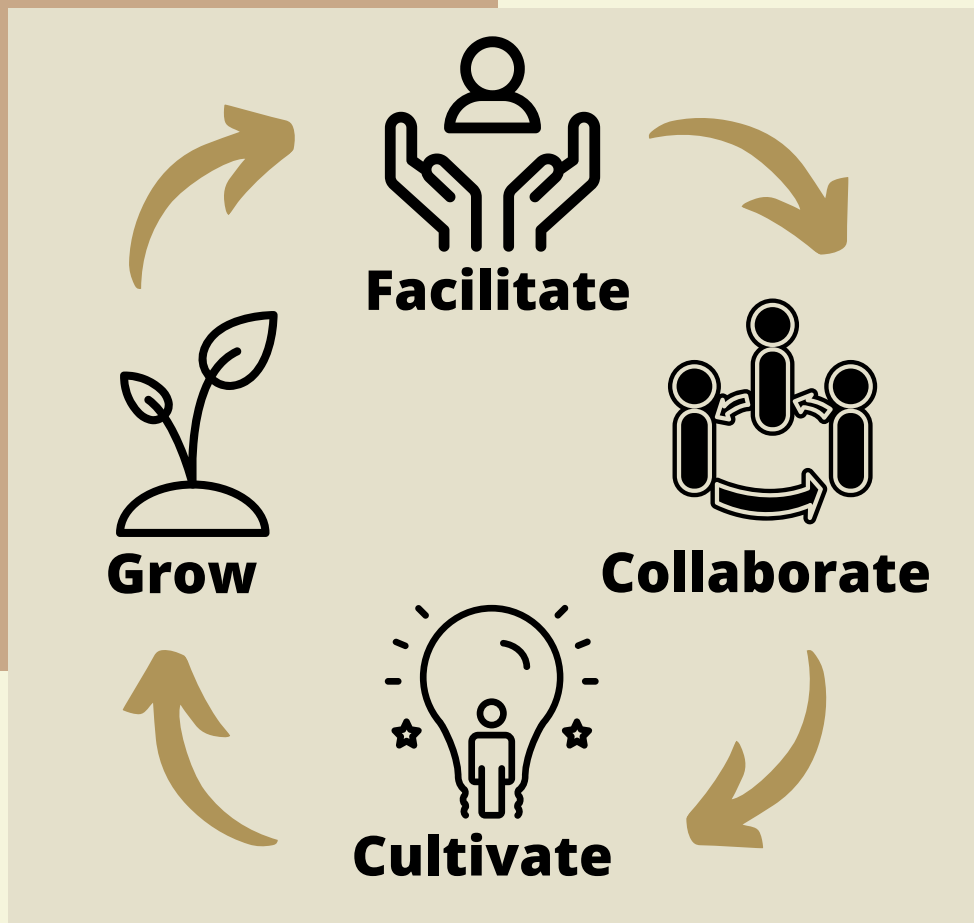
[@koalahubandacademy](https://www.facebook.com/koalahubandacademy)



[@smallschooltv](https://twitter.com/smallschooltv)



# What We Do

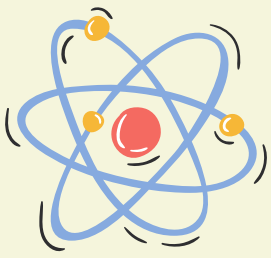


Koala Academy, Learning Without Walls, is about facilitating young people's learning, whilst building on the positive relationships that are made at the community hub.

We encourage all learners to join our Community Hub peer groups in order to access social opportunities. We operate a low arousal and sensory safe environment that is low demand. This ensures that those who present with a PDA (Pathological Demand Avoidance) profile can access our setting.

Research shows that neurodivergent young people are much more likely to engage in education when the learning allows them to follow their own interests. We see ourselves as facilitators - creating a safe and nurturing learning environment, whilst encouraging young people to follow their interests. We then collaborate and help them to cultivate their own ideas and experiences - which in turn make for knowledge and growth. At Koala, this is done in an authentic way, giving relevance to real-world experiences.

The team are able to support young people who experience severe anxiety and provide a flexible and nurturing approach to education.



# Distance Learning

IN ASSOCIATION WITH:



Koala are very excited to be partnering with Spectrum Space to provide a unique distance-based learning package. Developed by Clare Truman, author of the critically acclaimed 'The Teachers Introduction to Pathological Demand Avoidance', the programme is very much aimed at PDAers and those who cannot access a learning space away from home.

Available for **5 to 18 year olds**, the Learning Without Walls Distance Package will provide families with a broad and balanced curriculum, through bespoke activities designed to appeal to young peoples' particular interests. Physical resources are delivered each week along with instructions for how to deliver the activities.



Parents may choose to deliver the learning themselves or to employ personal assistants to deliver the learning activities for them. It is envisaged that the learning activities will take ten hours a week to complete. Activities will be focussed on the Functional Skills and ASDAN programmes.

At the start of the programme, we meet with parents and whoever will be delivering the activities, to introduce the programme and best practice for delivering a child-led curriculum. Regular communication via telephone and email ensures that activities are monitored and adapted as students make progress in their learning. Learning progress is recorded via Kinteract.



Once a half term, parents and the Koala team meet to review the students' progress and set targets for the next half term.

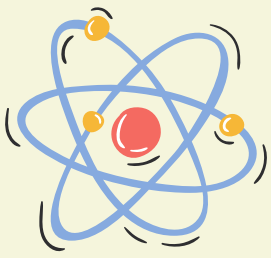
In addition to this, Koala Academy will run a half-termly 'get together' for the distance learning community. Also offered to this cohort is:

- Access to our discord gaming and chat community
- Access to all Koala Community hub peer groups
- Regular email support for parents

**This programme is initially limited to 6 families within Hampshire, Wiltshire and Berkshire. The programme will commence in early 2023.**

Video and photograph examples of the learning boxes can be seen at <https://www.koalaacademy.co.uk/learning-without-walls>





# Hybrid Learning

The Hybrid Learning route incorporates the learning from the Distance Learning Package, with regular sessions at the Community Hub. This option is available for **8 to 18 year olds**, due to Ofsted regulations.



Two x 2 hour sessions will take place every week at the hub and facilitate social, therapeutic, mentorship opportunities and invitations to learn.

These sessions will not only ensure that regular in person safeguarding checks are made, for those young people not currently attending a regular school setting, but also allow opportunities to work on educational projects together. The basis for these projects will centre on the STEAM ethos of the Koala Academy.



Assessment will be carried out via Kinteract, in a way that students are not explicitly aware of the pressures of being assessed. The Kinteract assessment system will be used to record young people's learning through pictures, evidence of written work and other multi-media sources.

Additional activities can be arranged separately including farm visits, 1:1 tutoring sessions, mentorship, art and other programmes.

**Initially, spaces will be limited to 6 young people and cover Hampshire, Wiltshire and Berkshire.**



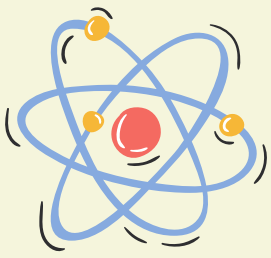
All staff will be fully DBS checked in line with our Safer recruitment policy.

**Learning without Walls is registered with Ofsted on the voluntary childcare register.**

**However, this provision will become part of the Koala Academy when the school is registered with the DfE.**



Video and photograph examples of the learning boxes can be seen at <https://www.koalaacademy.co.uk/learning-without-walls>



# Teaching Assistants

In addition to the core Learning Without Walls offer, we can provide teaching assistants to young people in Hampshire.



Many families find that their young person can access the programme without support, but for those who cannot, we can provide this additional support.

All of our teaching assistants will be experienced working with young people with SEND needs, as well as those who may experience other social and emotional needs.

All teaching assistants are trained in the following areas before engaging with young people:



- Low arousal methods
- PDA
- Mentoring strategies
- Neurodivergency

Once it is agreed that your child requires a teaching assistant, in order to access the Hybrid or Distance Learning package, we will ensure that your child is matched with the most suitable adult.

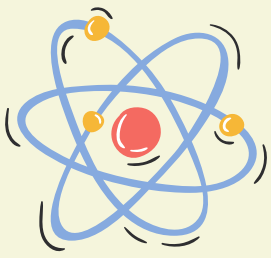


We are passionate about offering a consistent service to young people - if your child's Teaching Assistant is no longer able to work with your child, a full transition will take place to support any changes in delivery.

We will also support your child to access social opportunities through the Koala Community Hub.



All teaching assistants receive an enhanced DBS check and are regularly monitored as part of our quality assurance checks.



# Tutors and Mentors

In addition to the core Learning Without Walls offer, we can provide tutors and mentors to young people in Hampshire.



Our tutors are experienced in working with young people with SEND needs, as well as those who may experience other social and emotional needs.

All tutors are trained in the following areas before engaging with young people:

- Low arousal methods
- PDA
- Mentoring strategies
- Neurodivergency



The majority of our mentors are either neurodivergent or have vast experience working with neurodivergent young people.

Once it is agreed that you require a mentor or tutor from us, we will ensure that your child is matched with the most suitable adult.

We are passionate about offering a consistent service to young people - if your child's tutor is no longer able to work with your child, a full transition will take place to support any changes in delivery.

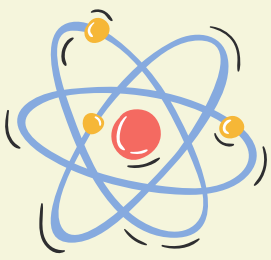


We will also support your child to access social opportunities through the Koala Community Hub.

All tutors are qualified teachers, receive an enhanced DBS check and are regularly monitored as part of our quality assurance checks.







# Our setting

Our meet-ups, for the Hybrid and Distance learning programmes, all take place at the Koala Community Hub based in Andover, Hampshire.



Our setting is sensory friendly, calm and we place reduced demands on our young people. This ensures that relationships can be built in a nurturing and positive way.

Young people are encouraged to self regulate, with our support and advocate for their needs.





To find out more regarding costings and referrals, please email [hello@koalaacademy.co.uk](mailto:hello@koalaacademy.co.uk)

We encourage parents, schools and SEN team representatives to contact us about the needs of individual young people.

[www.koalaacademy.co.uk](http://www.koalaacademy.co.uk)  
[www.koalacommunityhub.co.uk](http://www.koalacommunityhub.co.uk)

[www.asdan.org.uk](http://www.asdan.org.uk)  
[www.spectrumspace.co.uk](http://www.spectrumspace.co.uk)

